

THE  STAR

# STRADBROKE SEASON

*Style Guide*



BRISBANE  
RACING CLUB

*Feel Closer.*



# Contents

2	Pump up the Colour
4	Power Dressing
6	Textured Embellishments
8	Accessorise to Impress
10	An Ode to the Brim
12	Finer Details
14	Credits

# 2023 Style Guide

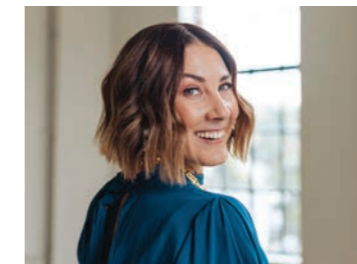
## THE DEFINITIVE TRENDS FOR THE STAR STRADBROKE SEASON


For The Star Stradbroke Season, with six weekends of celebration as part of the Queensland Racing Carnival, we've asked Brisbane Racing Club Stylist Kerrie Carucci for her tips so that racegoers can hit the track this season in the most wearable trends.

We'll be exploring how to embrace the trackside fun and fashion, all whilst nailing the themes and meeting racing guidelines with ease. Play with bold new looks that will keep you trendsetting and feeling comfortable, even on those unseasonably warmer days.

Get ready to put your most fashionable step forward in the Duke Realty Fashions on the Field competition, hosted across three major racedays of The Star Stradbroke Season. Be prepared to embrace traditional black and white on Ladbrokes Derby Day, indulge glamorous individuality to shine for Channel 7 Oaks Day, and lean into the classic black and white with a touch of red to bring it home on The Star Stradbroke Day.

Be inspired by shoppable looks as we feature the standout trends of the season to have you gearing up with confidence and fashion flair, ready for your next raceday.



**Kerrie Carucci**  
Brisbane Racing Club Stylist  
 [@kerriecarucci\\_stylist](https://www.instagram.com/kerriecarucci_stylist)



# Carnival DATES

SATURDAY 29 APRIL 2023  
**Sky Racing Guineas Day**  
Eagle Farm Racecourse

SATURDAY 13 MAY 2023  
**Ladbrokes Doomben 10,000 Day**  
Doomben Racecourse

SATURDAY 20 MAY 2023  
**XXXX Doomben Cup Day**  
Doomben Racecourse

SATURDAY 27 MAY 2023  
**Ladbrokes Derby Day**  
Eagle Farm Racecourse

SATURDAY 3 JUNE 2023  
**Channel 7 Oaks Day**  
Eagle Farm Racecourse

SATURDAY 10 JUNE 2023  
**The Star Stradbroke Day**  
Eagle Farm Racecourse

# *Pump up* **THE COLOUR**

Winter is often pronounced as the season for embracing warm neutrals and monochrome. However, we are seeing a shift away from tradition with strong, bold splashes of colour coming through. It's time to embrace rich and varying shades. Aside from big movements between jewel tones of emerald green, magenta and burgundy we are witnessing bold strides towards fiery red, deep yellows, fuchsia, and aquamarine blue.



## *Stephanie wears*

Clementine Dress by **Perri Cutten**  
Millinery by **Kathryn Lee Millinery**  
Earrings by **Kelly Woodcroft**  
Bag by **Olga Berg**  
Heels by **Nine West**

## *Francois wears*

Coronari Suit Jacket by **MJ Bale**  
Trousers by **MJ Bale**  
Shirt tie and pocket square by **MJ Bale**  
Loafers by **Aquila**

# Power DRESSING

Allow a punch of lip colour to collide with structured silhouettes and impeccable suiting to engage a sense of power dressing within your look. This trend of masculine tailoring has far surpassed any runway phase, proving that it's here to stay.

Gents, the look is all about embracing tailored wool or silk blend suiting. Alternatively, as we move away from the traditional, experiment with bold prints and patterns to play to a daring new look. Continue this dapper trend with suede loafers; oozing style and comfort.

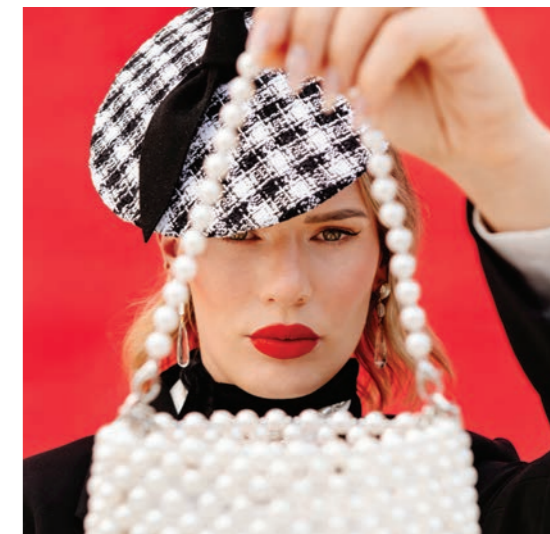


## *Stephanie wears*

Black crepe soho jacket by Bianca Spender  
Black crepe procession pant by Bianca Spender  
White top by Sheike  
Pearl choker by Zara  
Millinery by Allport Millinery  
Earrings by Kelly Woodcroft  
Pearl Bag by Zara  
Black patent heels by Nine West

## *Francois wears*

Wool Cotton Check Blazer by Calibre  
Black Cotton Pant by Calibre  
White tailored shirt by Calibre  
Tie & Tie Bar by Calibre  
Pocket square by Calibre  
Sunglasses by Ray-Ban  
Footwear by Calibre





# Textured EMBELLISHMENTS

Our order of the day offers itself to those more delicate details. Accentuating on the oh-so-bold feminine suiting, the addition of sequins will have eyes swooning for all the right reasons. We're encouraging an emphasis on textural dressing across womenswear and menswear, whilst embracing embellishments that bring interest to any look. For those wanting to add a more subtle glimpse of this trend to their trackside attire, play with texture through ties and pocket squares to achieve that perfectly suave look.



## Stephanie wears

Black Sequin Blazer by Country Road  
Black Sequin Pants by Country Road  
Millinery by Allport Millinery  
Bag by Olga Berg  
Earrings by Zara  
Black patent heels by Nine West

## Francois wears

Kent Suit Jacket By MJ Bale  
Kent Trousers by MJ Bale  
Shirt, tie and pocket square by MJ Bale  
Sunglasses by Ray-Ban  
Shoes by Aquila



# Accessorise TO IMPRESS

The continuation of 'over-the-top' embellished accessories is here to stay for the season ahead. Whether it's that sweet sparkle of millinery frosted in diamante rope detailing or stepping out in timeless pearl footwear, it's all in the detail. Complete any look by adding a statement clutch or bold drop earrings for a glamorous impact.

For those wanting to add a more subtle glimpse of this trend to their trackside attire, look for button details or embrace veiled, embellished or jewelled headbands to mirror that touch of sparkle.



## *Stephanie wears*

Red collared dress by Milva Carucci Designs  
Hat by Designs by SHR  
Earrings by Zara  
Bag by Olga Berg  
Shoes by Mach & Mach

## *Francois wears*

Wool Cotton Check Blazer by Calibre  
Black Cotton Pant by Calibre  
Black tailored shirt by Calibre  
Tie & Tie Bar by Calibre  
Pocket square by Calibre  
Footwear by Calibre

# *An ode to* **THE BRIM**

Allow yourself to dazzle over Autumn / Winter materials by embracing felt, leather and fabric headwear, as opposed to straw. In particular, add a wide brim hat, for a comeback look that embraces exaggerated accessorising and comfort. Alternatively, a classic Trilby or Fedora marks itself as a good seasonal choice.



## *Francois wears*

Suit jacket and pants by Wil Valor  
Shirt, tie and pocket square by Wil Valor  
Fedora hat by Bluegrass Hat Co



## Finer DETAILS

Splashes of colour continue to make a statement this season. But this time we are not limiting it to moments, rather we're showcasing these trending Autumn / Winter palettes from head-to-toe. We can assure you, the tailored addition of a lightweight wool blazer and tasteful coordination of a complementing Fedora will have you feeling raceday ready.

### *Stephanie wears*

Dress by Husk  
 Millinery by Martina McGrath Millinery  
 Earrings by Kelly Woodcroft  
 Mesh Gloves by Husk  
 Ring by Lovisa  
 Bag by Olga Berg  
 Black patent heels by Nine West

### *Francois wears*

Suit jacket and pants by Wil Valor  
 Shirt, tie and pocket square by Wil Valor  
 Fedora hat by Bluegrass Hat Co  
 Loafers by Aquila





## Credits

### **Talent**

Brisbane Racing Club Ambassador & Jockey Stephanie Thompson and Francois Passamani of Chic Brisbane

### **Photographer**

Taylor Kezia

### **Lighting Assistant**

Jordan Dwyer

### **Creative Direction & Styling**

Kerrie Carucci

### **Styling Assistant**

Lisa Naumann

### **Hair & Make Up**

Reanin Glah

### **Locations**

Eagle Farm Racecourse & Treasury Brisbane

## Connect



[www.brc.com.au](http://www.brc.com.au)



[/brisbane-racing-club](https://www.linkedin.com/company/brisbane-racing-club)



[@BrisRacingClub](https://twitter.com/BrisRacingClub)



[@BrisbaneRacingClub](https://www.facebook.com/BrisbaneRacingClub)



[@brisbaneracingclub](https://www.instagram.com/brisbaneracingclub)



[@brcstyle](https://www.instagram.com/brcstyle)



BRISBANE  
RACING CLUB

*Feel Closer.*