



BRISBANE
RACING CLUB

NEWSLETTER

ISSUE 40 - DECEMBER 2019



A MESSAGE FROM THE CHAIRMAN

ONE of the highlights of the BRC Spring Carnival was the performance of the Eagle Farm course proper.

The racing surface easily coped with a heavy workload which is a huge plus for the track given it only re-opened on December 22.

Since that re-opening all the signs of this new surface have been positive. Further proof is that Canadian Club Melbourne Cup day was the fifth meeting in 31 days for the Eagle Farm track.

"Since re-opening all the signs of the new (Eagle Farm) surface have been positive."

At all these meetings the track played fairly to all runners. Winners came from on-speed, well back, inside and outside.

As planned, the track rejuvenation was in full swing straight after the last race on Cup day.

The track should spring back bigger and better after close to a six-week break.
Mark down December

14 as a "must do" date when racing is back at headquarters.

A feature of this meeting will be the \$250,000 Roku Gin Gateway, a new 1400 metre race for four-year-olds with the winner automatically qualifying to run in the Stradbroke next winter.

Hopefully the TAB Summer Racing Carnival results mirror last winter when so many competing horses progressed onto excellent Spring Carnival performances.

The flagbearer for benefit of the Winter Carnival was the Melbourne Cup winner Vow And Declare who ran in the Grand Prix (6th), Queensland Derby (2nd) and Tatt's Cup (1st).

He became the 13th Melbourne Cup winner to have raced or do pre-training in the Queensland winter. The previous winners were: Shocking (2009), Viewed (2008), Ethereal (2001), Brew (2000), Kensei (1987), Gurner's Lane (1982),

Think Big (1974-75), Macdougall (1959), Baystone (1958), Rising Fast (1954) and Hiraji (1947).

Queensland Guineas winner Kolding (Epsom and Golden Eagle) wasn't far behind as a walking advertisement for our Winter Carnival.

The jockeys' State Of Origin challenge will be run over two days - Friday (Doomben) and Saturday (Eagle Farm - on December 13-14. The presence of our top local riders taking on big names from other states and New Zealand will be an added incentive for all Members to go racing that weekend.

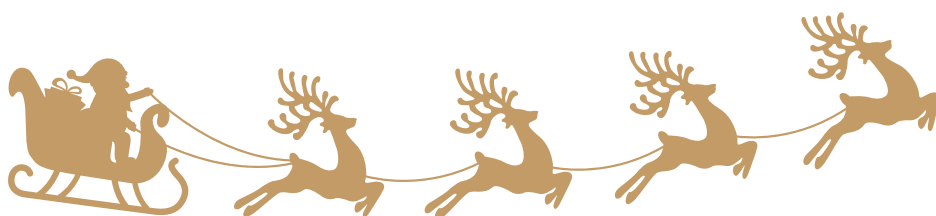
As part of the BRC's willingness to engage with the local community we have welcomed early morning Tai Chi (Monday) and Heart Fit (Tuesday) classes in the Stradbroke Plaza at the back of the public grandstand at Eagle Farm.

I recommend both of these easily managed exercise classes to any BRC Members living nearby.

Neville
Neville Bell
BRC Chairman

*Christmas
Members
Drinks*

4-5pm Sat 14 Dec
Derby Bar
Eagle Farm Racecourse



RACING NEWS

In an open market Queensland racing administrators would have willingly paid Vow And Declare's connections a Melbourne Cup bonus of a million dollars or more.

The advertising value for the Brisbane winter from a Queensland-owned Melbourne Cup winner springboarding out of three mid-year starts at Eagle Farm including the Tattersall's Cup victory was priceless.

"...the summer carnival this year will rise to another level."

In fact there were a lot of spring results which cast the Winter Carnival as such a powerhouse destination to chase black-type and good prizemoney, but just as importantly, lay a foundation for a successful campaign for the remainder of the calendar year.

Queensland Guineas winner Kolding was also a star flagbearer for the benefits of a northern winter. He earned \$4.87 million in the spring including victories in the Epsom Handicap and the inaugural The Golden Eagle.

Now the racing industry is hoping the TAB Summer Carnival this year will rise to another level.

Magic Millions day is a magnet on its own with its big stakes. But a carnival is not one raceday. Racing Queensland and the Brisbane Racing Club jointly have presented an upgraded program of events which are attractive targets, but also key stepping stones to the Magic Millions grand final.

The TAB Origin Jockeys Series will be conducted over two days on Friday (Doomben) and Saturday (Eagle Farm) on December 13-14.

It is hoped some of the high profile interstate riders will also be competing on major days at the BRC summer feature line-up of races.

Similarly an influx of interstate horses from big name stables will add a lot of gloss to the carnival.

Chris Waller, James Cummings, Kris Lees, Peter and Paul Snowden, Mark Newnham, Gai Waterhouse and Adrian Bott, Ciaron Maher and David Eustace, all have an intimate knowledge of Brisbane racing and are certain visitors this summer.

Just because they come doesn't mean Queensland-based horses and participants will be outclassed. The

local riders featured heavily in the accompanying list of winners from the BRC carnival last summer.

However, it will be a significant challenge for local trainers and jockeys. Racing carnivals have to be the best meets to have an impact on betting turnover and attendance.

The response to a new innovation - The Gateway, a \$250,000 race exclusively for four-year-olds over 1400 metres at Eagle Farm on December 14 - will be interesting. The winner will be exempt from the ballot for the \$1.5 million TAB Stradbroke, over the same track and distance, next June.

As part of the build up to the MM Day this year there will be six MM wild card races where the winners of selected events over meetings at Eagle Farm on December 21 and 28 and the Gold Coast on January 4 will be afforded an automatic late entry into corresponding MM events on January 11.

Brisbane's TAB Summer Carnival will be conducted over six meetings from November 30 to December 28.

Bart Sinclair, BRC Racing Manager

2018 SUMMER RACING CARNIVAL BLACK-TYPE RESULTS

Race	Winner	Jockey	Distance (m)	Weight (kg)	Trainer
GROUP 3					
George Moore Stakes	I'm a Rippa	Brad Stewart	1200	56.5	Tony Gollan
Vo Rogue Plate (3YO)	Boomsara	Damian Browne	1350	57.0	Chris Munce
B.J. McLachlan Stakes (2YO)	Sun City	James McDonald	1200	57	Tony McEvoy



ASCOT PARK OPENING

The significant upgrade of Ascot Park adjacent to Eagle Farm has created a wonderful asset for the residents of the neighbouring suburbs and the broader Brisbane community.

The park for many decades was primarily used as a car park for BRC Members and industry participants on Eagle Farm racedays.

When the BRC entered into negotiations with the Brisbane City Council for approval of the Master Plan for the Eagle Farm - Doomben precinct, it quickly became apparent the rejuvenation of Ascot Park was a key ingredient to reaching common ground for all parties.

The BRC now has an infield car park for Members and the public via an easy to access vehicular tunnel off Nudgee Road.

The Council is to be congratulated for the quality of the reconstruction of the area which now will be a magnet for local families and owners of dogs who will have their own designated park. A feature is the rotunda, which is ideal for small gatherings or music recitals.

"The park has significant historical value. The nearby train station was opened in 1882 and American troops were stationed there in World War II," BRC chairman Neville Bell said.

The park was officially re-opened on November 3 by Lord Mayor Adrian Schrinner and Councillor David McLachlan.



RACING WHAT'S ON

DECEMBER

SATURDAY 7TH

TAB Brisbane Handicap Raceday
Doomben Racecourse

FRIDAY 13TH



TAB Origin Jockey Series
Twilight Raceday
Doomben Racecourse

SATURDAY 14TH

TAB Origin Jockey Series
Raceday
Eagle Farm Racecourse

WEDNESDAY 18TH

Wednesday Raceday
Doomben Racecourse

SATURDAY 21ST

Mullins Grand Prix Raceday
Eagle Farm Racecourse

SATURDAY 28TH



Road to Magic Millions
Member & Friends Raceday
Eagle Farm Racecourse

JANUARY

WEDNESDAY 1ST

New Year's Day Raceday
Doomben Racecourse

THURSDAY 9TH

Thursday Raceday
Doomben Racecourse

THURSDAY 16TH

Thursday Raceday
Doomben Racecourse

JANUARY

SATURDAY 18TH

Saturday Raceday
Eagle Farm Racecourse

THURSDAY 23RD

Thursday Raceday
Doomben Racecourse

THURSDAY 30TH

Thursday Raceday
Doomben Racecourse

FEBRUARY

SATURDAY 1ST



Lunar New Year Raceday
Eagle Farm Racecourse

THURSDAY 6TH

Thursday Raceday
Doomben Racecourse

SATURDAY 8TH

Cascade Raceday
Eagle Farm Racecourse

THURSDAY 13TH

Thursday Raceday
Doomben Racecourse

SATURDAY 15TH

Saturday Raceday
Eagle Farm Racecourse

WEDNESDAY 19TH

Wednesday Raceday
Doomben Racecourse

SATURDAY 22ND

Girls' Day Out presented by
Priceline Pharmacy Ascot
Eagle Farm Racecourse

SATURDAY 29TH

Tattersall's Raceday
Doomben Racecourse

MEMBER PROFILE

LINDA HUDDY

The first ten years of Linda Huddy's working life were in the racing industry, not in some office job. She had a hands-on role with thoroughbreds at One Tree Hill Stud in South Australia, later working for Bart Cummings in his Adelaide stable and then for Colin Hayes at his much admired Lindsay Park Breeding and Racing Property at Angaston.

She resettled to Mt Isa where she met and married husband Graham Huddy. In 1982, the couple established Huddy's, Company which, provided mining and earth moving services, equipment hire and civil contracting services.

When the Huddys sold the business in a mega deal in 2012, the sale proceeds allowed them to broaden and significantly upgrade their ownership of thoroughbreds.

These days, Graham and Linda live at Peachester Lodge, a multi-purpose thoroughbred property in the Sunshine Coast Hinterland.

The wide ranging Peachester Lodge facilities offer breaking-in and pre-training services as well as a home for some of the Huddy-owned broodmares.

"We have about 20 mares in Australia and another ten in New Zealand," Linda, who loves studying bloodlines revealed.

"We sell some of the yearlings each year. We had an I Am Invincible colt sell at the Inglis Easter sales two years ago for \$1 million. He was bought for Hong Kong."

The most successful Huddy runner to date was Shoot Out who won the prestigious AJC Derby at Randwick.



The one race Linda would most love to win is the Cox Plate. "Shoot Out fourth to So You Think in 2010 and fifth to Ocean Park in 2012. It was a great thrill to be involved in a Cox Plate," she said.

"I love Cup Week at Flemington. Graham and I have a lot of fun over the whole week. But the Cox Plate is the ultimate test."

Linda has joined the Brisbane Racing Club as a Perpetual Member and Peachester Lodge is a member of the BRC's Chairman's Club.

The Huddys enjoyed BRC Summer Carnival success with Most Important who landed a \$500,000 bonus by taking out the Triple Crown sprint series in 2016. He also won feature races over summer in 2017 and 2018.

CHRISTMAS MOVIES

16 - 19 December

16 MONDAY DECEMBER	17 TUESDAY DECEMBER	18 WEDNESDAY DECEMBER	19 THURSDAY DECEMBER

- Gold coin donation on entry
- Free parking
- Christmas carols
- Face painting
- A visit from Santa

FREE frozen drink on arrival when you pre-register

PROUDLY SPONSORED BY

BRC.COM.AU • (07) 3268 2171 • EVENTS@BRC.COM.AU



EAGLE FARM RACECOURSE

ROAD TO MAGIC MILLIONS

—MEMBERS AND FRIENDS RACEDAY—

SATURDAY 28 DECEMBER 2019



SATURDAY MEMBERS PACKAGE



Full Members & Guests Badge Holders: \$50pp
Non-Members: \$95pp

- Reserved table in the Champagne Bar
- Famous tapas-style lunch platters featuring cured meats, aged cheeses, terrine, artisan pate and stone baked breads
- Tote facilities and bookmakers nearby
- Fantastic views of the Winning Post
- Plasma screens for race viewing

BLACK-TYPE RACING LUNCH



Full Members & Guests Badge Holders: \$95pp
Non-Members: \$115pp

- Reserved table in the Ascot Bar
- 3hr beverage package of Selected Australian red and white wines, sparkling, local beers, soft drinks & orange juice
- 2 course plated menu (entree and main)
- Tote facilities and bookmakers nearby
- Cash bar available for purchases
- Fantastic views of the Winning Post
- Plasma screens throughout area for interstate race viewing

THANK YOU TO ALL MEMBERS WHO JOINED US AT THE CHANNEL 7 SPRING RACING CARNIVAL PRESENTED BY LEXUS

Five action-packed days culminated with the highly anticipated Canadian Club Melbourne Cup Day. Eagle Farm Racecourse truly was like nowhere else in Brisbane!

Brisbane Racing Club Members were treated to a range of surprise and delights on course, including:



4 complimentary passes to Member and Friends day, 12 October



Spin and win wheel with thousands of dollars of prizes on Member and Friends day, 12 October



2 complimentary Members Reserve passes to the middle 3 days of Spring



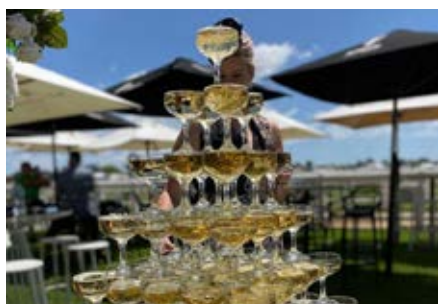
Best dressed Member prizes



Moët Members Moment reserved area



Complimentary beverage tastings



Complimentary Moët & Chandon champagne tower



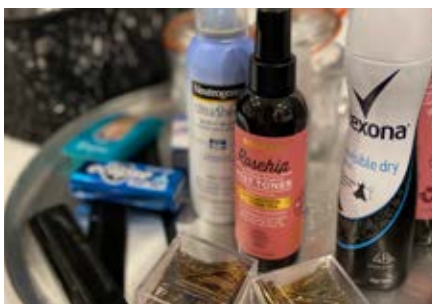
Complimentary gifts on arrival, including Spring Racing Carnival fans and button hole rose



Roaming makeup artists



Shoe shiner



Bathroom attendants



Butler service staff in Derby Bar



the
SOCIETY
New Year's Eve Party
EAGLE FARM RACECOURSE

PRESENTED BY
 **ROKU GIN**
THE JAPANESE CRAFT GIN

-  Ring in 2020 at Brisbane's most gorgeous rooftop bar
-  5 hour food & beverage package
-  DJ entertainment all night

TICKETS \$149 PER PERSON

the **SOCIETY** EVENTS@BRC.COM.AU
BRC.COM.AU/THESOCIETY FOLLOW @THESOCIETYBNE



Brisbane Racing Club Members Experience

Enjoy overnight accommodation in one of our Premier Suites, buffet breakfast for two, a bottle of French Sparkling Wine on arrival and a Maserati transfer to Doomben Race Course

All for \$150 in addition to our Fully Flexible Rate

Booking Code: BRCVIP

*Package & transfers subject to availability

 **Emporium** HOTELS South Bank
exquisite stays

267 GREY STREET, SOUTH BANK QLD 4101
07 3556 3333 | EMPORIUMHOTELS.COM.AU

TULLOCH HOUSE
AT ASCOT GREEN



ARTIST'S IMPRESSION
INDICATIVE ONLY AND SUBJECT TO CHANGE

LIFE ON THE GREEN

**1, 2 & 3 BED RESIDENCES
NOW SELLING FROM \$480,000***

Introducing Tulloch House, the next chapter at Ascot Green. Set within the peaceful tranquility of its own parkland setting. This next release will offer one, two and three bedroom apartments and an exclusive series of pavilion residences.

**SALES SUITE OPEN DAILY FROM 10AM - 5PM
EAGLE FARM RACECOURSE
230 LANCASTER ROAD ASCOT**

TULLOCHHOUSE.COM.AU
T: 3859 5959

  **BRISBANE RACING CLUB**

*PRICES CORRECT AT TIME OF PUBLICATION AND SUBJECT TO CHANGE



BRISBANE
RACING CLUB

FOR BOOKINGS AND ENQUIRIES PLEASE VISIT
WWW.BRC.COM.AU OR PHONE 07 3268 2171

THE BRISBANE RACING CLUB PROUDLY ACKNOWLEDGES THE OUTSTANDING SUPPORT OF ITS PARTNERS

PRINCIPAL PARTNERS



MAJOR PARTNERS



PARTNERS & SUPPLIERS

ADSS
AICLA
Alcyone Hotel Residences
Ambassador Travel
Artisan Aesthetic Clinics
AstroJump
Authentic Security
Billy J Boutique
Boomer Bloodstock
Bouquet Boutique
City Property Services
Channel Seven
Clayfield College
Coca Cola Amatil
Diageo
Eureka Stud
Garrards Pty Ltd
Hamilton Hotel
Hampton Event Hire
Innovative Hiring

IPG Marketing Solutions
LION
LED Superscreens
Lendlease
Mirvac
Mitavite / Hyain
Mitty's
Moët and Chandon
Mullins Lawyers
National Jockeys Trust
NECA
Newington Farm
Nuturf
Octopus Training
Padua College
Pages Event Hire
Priceline Pharmacy Ascot
Qld Country Life
Qld Hotels Association
Queensland Chinese Jockey Club

Racecourse Road Business Group
RadioTAB
Samuel Smith & Son
Sirromet Wines
SUEZ
Sky Racing
Southbank Emporium
Sporting Chance Cancer Foundation
St Margaret's Anglican Girls School
St Rita's College
Treasury Brisbane
Triequithon
Hamilton Hotel
Thoroughbred Breeders Qld Association
Valiant Hire
Valmont Coatings
Westfield Chermside
Westpac

*International bloodstock agency
based in Queensland*

Contact Craig Rounsefell
0421270775

BOOMER BLOODSTOCK
INTERNATIONAL

Please note, racedays are subject to change.